

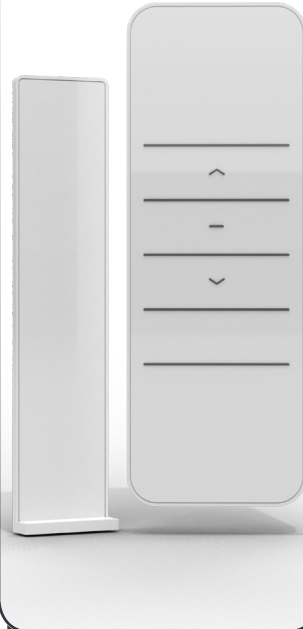


e series

INSTRUCTION MANUAL



*Motorized
Wand*



*Single Channel
Remote*



*Multi-Channel
Remote*

TABLE OF CONTENTS

Getting Started

NOTE: Your product will come ready to be installed and used without any programming needed. Use the instructions in this guide if there are any issues with your product.

Operating the Remote

- Motorized Wand Instruction Guide ----- 3
- Single Channel Instruction Guide ----- 4
- Multi-Channel Instruction Guide ----- 6

Questions?

Contact your Retail Dealer regarding any questions you may have about your E-SERIES product.

PLEASE KEEP THIS FOR FUTURE REFERENCE / TROUBLESHOOTING

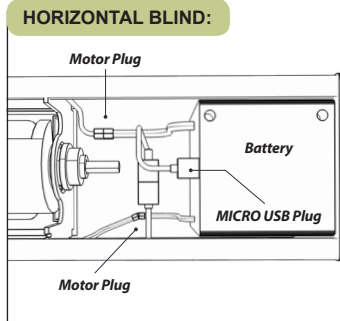




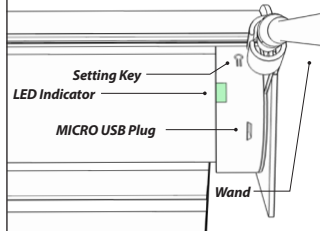
WELCOME TO YOUR E-SERIES PRODUCT WE HOPE YOU ENJOY THE EASE AND FUNCTIONALITY OF YOUR PRODUCT

E-SERIES MOTOR NOTE:

The E-SERIES Motor can be found on the headrail of your E-Series Product. If your product will not charge or function properly, remove the product from the window and make sure that all connections to the battery, motor, and wand are connected. (Horizontal Fabric E-Series only. Sheerview E-Series is an all-in-one motor/battery)



SHADE:



NOTE: Picture depicts underside of the shades headrail

WAKE YOUR E-SERIES PRODUCT

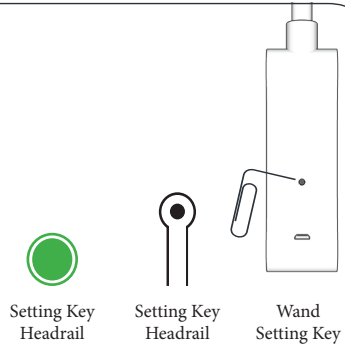
Press, UP or DOWN or STOP to wake your product in preparation to setting changes.

SETTING KEY NOTE:

The **Setting Key** can be found on the **Motor of the headrail** of your E-Series Product (green circular button) and on the back of the Motorized Wand (white pinhead button). A paper clip can be used to troubleshoot the function of the product.

- (pg. 3 Wand Instructions)
- (pg. 4 Single Channel Remote Instructions)
- (pg. 6 Multi-Channel Remote Instructions)

If your **Motorized Wand** is attached, there is a small pinhole **Setting Key** on the back just above the Micro USB port. Use this in-place of the Setting Key in the headrail, as this may be difficult to reach.



QUESTIONS?

Contact your Retail Dealer regarding any questions you may have about your E-SERIES product.

*Motorized
Wand*

PAGE 3

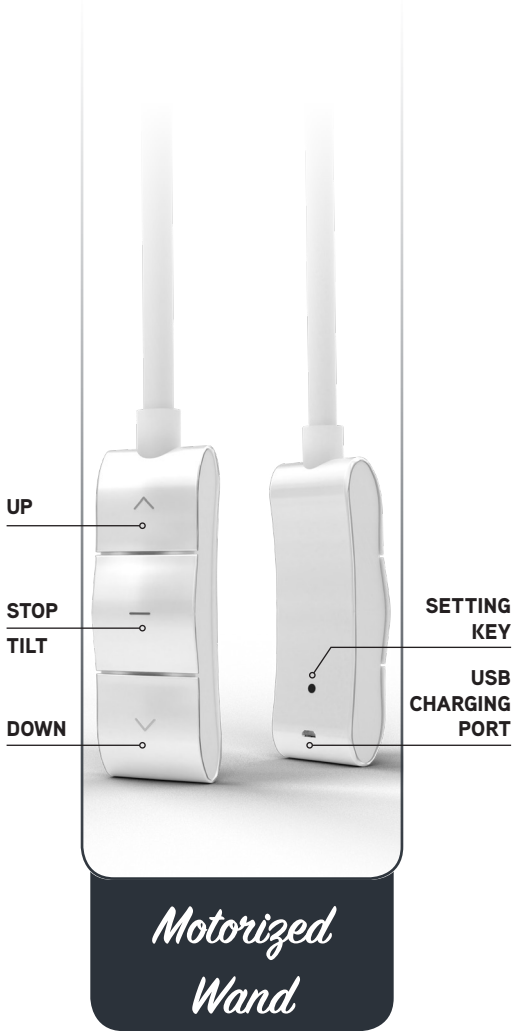
*Single Channel
Remote*

PAGE 4

*Multi-Channel
Remote*

PAGE 6





PROGRAMMING BUTTONS

1 SETTING THE TOP & BOTTOM POSITION:

SET TOP POSITION

- Lower the bottom-rail 5" from the top, then Press & Hold **UP+STOP** (2 jolts & 1 beep) then release the buttons.
- The motor will be in jog mode, press **UP** or **DOWN** to select your preferred top position of your product.
- Press the **STOP** Button to set this position. You have successfully set the top position.

SET BOTTOM POSITION

- Go to the desired bottom position, then Press & Hold **DOWN+STOP** (2 jolts & 1 beep) then release the buttons.
- The motor will be in jog mode, press **DOWN** or **UP** to select your preferred bottom position of your product.
- Press the **STOP** button to set this position. You have successfully set the bottom position.

2 CORRECT THE TOP & BOTTOM POSITION:

CORRECT TOP POSITION

- Press & Hold **UP+STOP** (1 jolt & 1 beep) then press the **UP** and **DOWN** button to the new desired top position.
- Press & Hold **UP+STOP** (1 jolt & 1 beep) to set this position. You have successfully set the corrected the top position.

CORRECT BOTTOM POSITION

- Press & Hold **DOWN+STOP** (1 jolt & 1 beep) then press the **DOWN** and **UP** button to the new desired bottom position.
- Press & Hold **DOWN+STOP** (1 jolt & 1 beep) to set this position. You have successfully set the corrected the bottom position.

COMPLETE RESET OF THE E-SERIES PRODUCT:

- Press & Hold the **SETTING KEY** until the product jolts 4 times a 3 second pause will happen in between jolts, then release. You will hear 4 beeps after you release the Setting Key.

TECHNICAL SPECIFICATIONS

- Rated Voltage: 12v
- Micro USB
 - Charge port on back of wand
- SETTING Key

3 SWITCH BETWEEN CONTINUOUS MODE & JOG MODE:

- Press & Hold **UP+DOWN** (1 jolt & 3 beeps), the motor has switched to Jog Mode from Continuous Mode (*comes pre-programmed on all E-Series Products*)
- Repeat the previous step if you want to switch back to Continuous Mode.

4 REVERSE CONTROL DIRECTION:

- Press & Hold the **Setting Key** on the Wand/Motor (3 jolts) 3 second pause in between each jolt, then release the button. you will hear 3 beeps
- You have reversed the directions of the **UP** and **DOWN** buttons.





UP

STOP
TILT

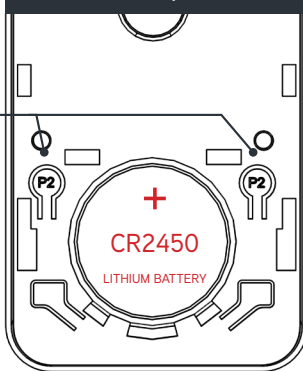
DOWN

BLUE
INDICATION
LIGHT

Single Channel Remote

Inside the Back of the Remote

P2



TECHNICAL SPECIFICATIONS

- Transmitting Frequency: 433.925MHZ
- Operating Temperature
 - 5°C - 50°C / 41°F - 122°F
- Transmission Distance:
 - Outside: 200 meters / 656 feet
 - Inside: (between 2 walls) 35 meters / 114 feet
- Remote Model Number: DD2700H

PROGRAMMING BUTTONS

1 PAIR A REMOTE:

- Press & Hold the **SETTING KEY** (pg. 1 *Setting Key Note*) on the back of the Wand/ Motor (2 jolts & 1 long beep), release the Setting Key, then press **UP** on the remote to pair.
- You will have successfully paired the remote when you receive feedback of (2 jolts & 3 beeps).

NOTE: The Single Channel Remote can control up to 20 E-SERIES products at one time. See "Pair A Remote" for instructions.

2 DELETE A REMOTE:

- Press & Hold the **SETTING KEY** (pg. 1 *Setting Key Note*) on the back of the Wand/ Motor (2 jolts & 1 long beep), release the Setting Key, then press **DOWN** on the remote to delete.
- You will have successfully deleted the remote when you receive feedback of (2 jolts & 5 beeps).

3 ADJUST THE SPEED OF YOUR PRODUCT:

- There are three speed levels (3-high, 2-medium, 1-slow) your product come set at speed level 3-high.
- Slow down the product speed, Press P2 then **DOWN** 2 times (you will hear the drop in motor speed at each level 2-medium, 1-low).
 - Speed up the product speed, Press P2 then **UP** 2 times (you will hear the rise in motor speed at each level 2-medium, 3-low).
 - You will have successfully slowed down or speed up your product when you receive (2 jolts and 1 beep).

4 SETTING THE TOP & BOTTOM POSITION:

SET TOP POSITION

- Go to the desired top position, then Press & Hold **UP+STOP** (4 jolts & one beep) then release the buttons.
- The motor will be in jog mode, press **UP** or **DOWN** to select your preferred top position of your product.
- Press the **STOP** Button to set this position. You have successfully set the top position.

SET BOTTOM POSITION

- Go to the desired bottom position, then Press & Hold **DOWN+STOP** (4 jolts & one beep) then release the buttons.

Next Page -

- Correct the Top & Bottom Position
- Switch between Continuous Mode & Jog mode
- Reverse control direction
- Complete reset of the E-SERIES Product





- The motor will be in jog mode, press **DOWN** or **UP** to select your preferred bottom position of your product.
- Press the **STOP** Button to set this position. You have successfully set the bottom position.

5 CORRECT THE TOP & BOTTOM POSITION:

CORRECT TOP POSITION

- Press & Hold **UP+STOP** (2 jolts & 1 beep) then press the **UP** and **DOWN** button to the new desired top position.
- Press & Hold **UP+STOP** (2 jolts & 1 beep) to set this position. You have successfully set the corrected the top position.

CORRECT BOTTOM POSITION

- Press & Hold **DOWN+STOP** (2 jolts & 1 beep) press the **DOWN** and **UP** button to the new desired bottom position.
- Press & Hold **DOWN+STOP** (2 jolts & 1 beep) to set this position. You have successfully set the corrected the bottom position.

6 SWITCH BETWEEN CONTINUOUS MODE & JOG MODE:

- Press & Hold **UP+DOWN** (2 jolts & 1 beep) the motor has switched to Jog Mode from Continuous Mode (*comes pre-programmed on all E-Series Products*)
- Repeat the previous step, if you want to switch back to Continuous Mode.

7 REVERSE CONTROL DIRECTION:

- Press & Hold the **SETTING KEY** on the Wand/Motor (4 jolts) then release the button.
- You will have reversed the directions of the UP and DOWN buttons.

SEE Motorized Wand (pg.3)

- Complete reset of the E-SERIES Product (pg.3)





UP

STOP

TILT

DOWN

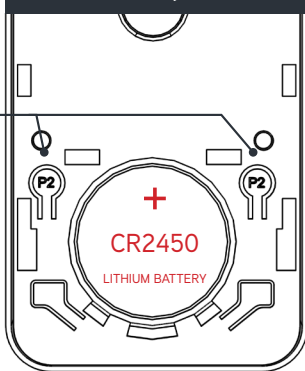
UP
CHANNEL
CYCLE

DOWN
CHANNEL
CYCLE

Multi-Channel Remote

Inside the back of the remote

P2



TECHNICAL SPECIFICATIONS

- Transmitting Frequency: 433.925MHZ
- Operating Temperature
 - 5°C - 50°C / 41°F - 122°F
- Transmission Distance:
 - Outside: 200 meters / 656 feet
 - Inside: (between 2 walls) 35 meters / 114 feet
- Remote Model Number: DD2702H

PROGRAMMING BUTTONS

1 PAIR A REMOTE:

- Select the channel you want to pair by pressing **LEFT <** or **> RIGHT**.
- Press & Hold the **Setting Key** (pg. 1 Setting Key Note) on the back/top of the Wand/Motor (1 jolt, release the Setting Key, you will hear 1 long beep), then press **P2** once, you will hear a beep, then press **UP** on the remote to pair.
- You will have successfully paired your Multi Channel Remote when you receive 1 jolt and 3 beeps.

2 ADD ANOTHER CHANNEL FOR A NEW E-SERIES PRODUCT:

- Press the **LEFT <** and **> RIGHT** buttons at the same time, the LCD will show a C, and then turn into 15. **DO NOT** let go of the buttons until you see the 15.
- Change the channel by pressing **<** or **>** press **STOP** at the desired number of channels you need.

NOTE: Channel "0" controls all Products on the Multi-Channel Remote.

NOTE: The Multi-Channel Remote can support up to 20 products per channel and up-to 15 channels per remote.

3 DELETE A REMOTE:

- Press & Hold the **Setting Key** (pg. 1 Setting Key Note) on the back of the Wand/Motor (2 jolts & 1 long beep), release the Setting Key, then press **DOWN** on the remote to delete.
- You will have successfully deleted the remote when you receive feedback of (1 jolt & 5 short beeps)

4 ADJUST THE SPEED OF YOUR PRODUCT:

- There are three speed levels (3-high, 2-medium, 1-slow) your product come set at speed level 3-high.
- Slow down the product speed, Press **P2** then **DOWN** 2 times pause for 1 second in between **DOWN** presses (you will hear the drop in motor speed at each level 2-medium, 1-low).
 - Speed up the product speed, Press **P2** then **UP** 2 times pause for 1 second in between **UP** presses (you will hear the rise in motor speed at each level 2-medium, 3-low).
 - You will have successfully slowed down or speed up your product when you receive (2 jolts and 1 beep)

SEE Motorized Wand (pg.3) /Single Channel Remote (pg.4-5)

- Set the Top & Bottom Position (pg.3 / pg.4)
- Correct the Top & Bottom Position (pg.3 / pg.4)
- Switch between Continuous Mode & Jog mode (pg.3 / pg.5)
- Reverse control direction (pg.3 / pg.5)
- Complete reset of the E-SERIES Product (pg.3)





INSTRUCTION MANUAL

WE HOPE YOU HAVE FOUND THIS INSTRUCTION GUIDE HELPFUL.

QUESTIONS?

Contact your Retail Dealer regarding any questions you may have about your E-SERIES product.



WARNING: THE E-SERIES PRODUCT CAN EXPOSE YOU TO CHEMICALS INCLUDING CARBON BLACK (CAS NO. 1333-86-4) WHICH IS KNOWN TO THE STATE OF CALIFORNIA TO CAUSE CANCER. FOR MORE INFORMATION GO TO WWW.P65WARNINGS.CA.GOV

DY.MES.W.1.15.18_LWF

