

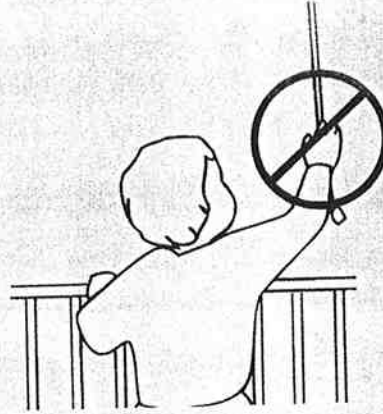


Cellular &
Semi-Cell
Fabric Shades
owner's handbook



WARNING

Young children can STRANGLE in cord and bead chain loops. They can also wrap cords around their necks and STRANGLE.



- Always keep cords and bead chains out of children's reach.
- Move cribs, playpens, and other furniture away from cords and bead chains. Children can climb furniture to get to cords.
- Do not tie cords together. Make sure cords do not twist together and create a loop.

**Cellular &
Semi-Cell**
Fabric
Shades

INSTALLATION INSTRUCTIONS

Step 1. Check Package Contents

Missing part? Call 800-264-1190

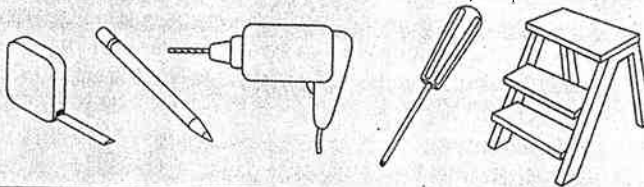
Mounting hardware kit includes the following:

Part	Quantity
a Mounting Brackets	2 (for 18" to 36" wide shades) 3 (for 36" to 48" wide shades) 4 (for 48" to 72" wide shades) 5 (for 72" to 96" wide shades)
b 1 $\frac{1}{8}$ " Screws	2 per bracket
c. Hold Down Brackets	2 per shade
d 1 $\frac{1}{2}$ " Screws	2 per bracket (for hold downs)
e Handle for Bottom Rail	1 (cordless shades only!)
f Handle for Middle Rail	1 (TDBU cordless shades only!)

[Note: one extra screw of each noted size is included for convenience]

Step 2. Tools Required

Screwdriver, tape measure, pencil, drill, drill bits, step ladder.



Note: use #6 plastic anchors for dry wall or plaster mounting (not included).
Drill Bits: for screws, use a 3/32" drill bit - for wall anchors, use 1/4" drill bit.

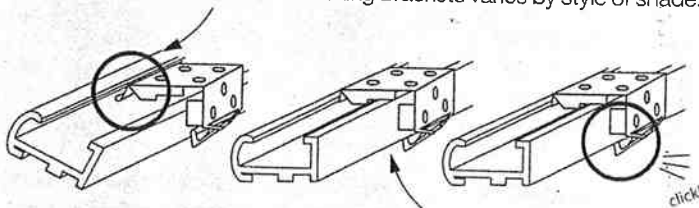
Step 3. Bracket Location and Installation

Your shade may be installed either inside the window frame or outside the window frame.

A mounting bracket should be positioned about 1" to 6" from each end of the head rail. For wider shades that require 3 or more brackets, these should be spaced evenly between the two outermost brackets. Always position the brackets such that there is no interference with the cords and/or mechanisms inside the head rail. The procedure outlined below will assure proper bracket placement.

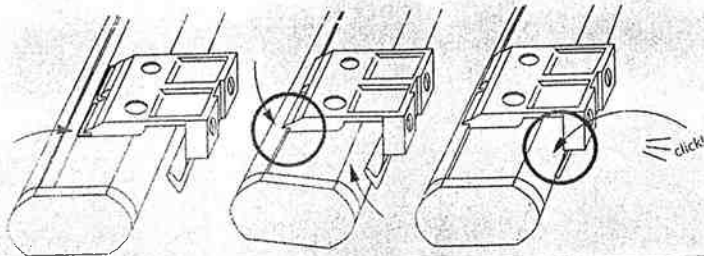
Attaching the brackets:

The shape of head rails and mounting brackets varies by style of shade.



Lift the head rail into position such that the front edge of each bracket is under the inner front edge of the head rail. Push the head rail upward until the flexible tab at the bottom of each bracket snaps onto the back of the head rail. Check carefully to assure that each bracket is properly secured.

**Cellular &
Semi-Cell**
Fabric
Shades



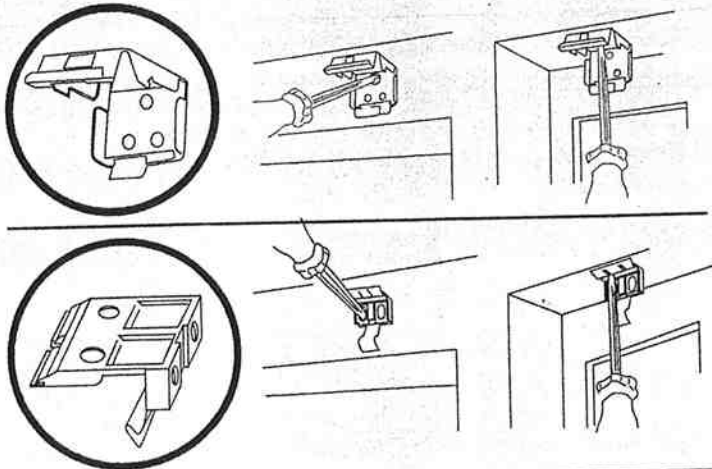
Lift the head rail into position such that the inner front edge of the head rail slides into the slot at the front of each bracket. Push the head rail upward until the flexible tab at the bottom of each bracket snaps onto the back of the head rail. Check carefully to assure that each bracket is properly secured.

For Outside Mounting:

Clip the brackets onto the head rail as described above. Hold the shade level at the height desired and center it over the window opening. Mark the exact location of each bracket with a pencil. Remove the brackets from the head rail and position the top of each bracket at the marked location and screw each bracket into the wall or window molding using the 1/8" screws, pre-drill the screw holes using a 5/64" drill bit.

For Inside Mounting:

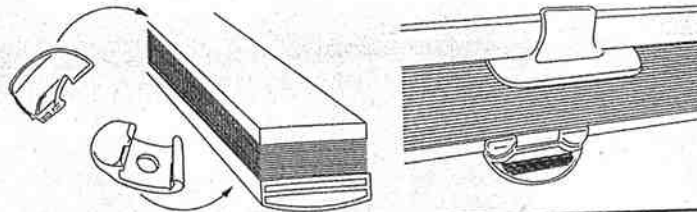
Clip the brackets onto the head rail as described above. Hold the shade in place and make a pencil mark at the rear of each bracket where it contacts the inside of the window frame. Remove the brackets from the head rail and align them with the marks. Attach each bracket using the 1/8" screws, pre-drill the screw holes using a 5/64" drill bit.



Step 4. Attach Handle(s) [Applies to cordless shades only]

Attach the Handle to the bottom rail as illustrated. The handle is designed to minimize contact with the shade fabric.

For TDBU cordless shades, attach the 2nd handle to the Middle Rail as illustrated.



Step 5. How to Operate

Standard Shade

To raise or lower the shade, pull the lift cords down and toward the center of the shade to release the cord lock. Adjust the shade to the desired height, and then move the lift cords toward the outside of the shade to lock in place.

Top-Down Bottom-Up Shade

The cords on the right side of the shade control Bottom-Up/Down function.

The cords on the left side control Top-Down/Up function.

Operate the cords as described above.

Semi-Cell & Sheer Roman 2-in-1 Shades

The cords on the right side of the shade control the Semi-Cell shade.

The cords on the left side control the Sheer Roman shade.

Operate the cords as described above.

Cordless Shade

Always raise and lower the shade SLOWLY(!) to assure that the pleated fabric stacks neatly.

To lower the shade: grip the bottom-rail/handle and slowly pull straight down.

To raise the shade: put one hand under the bottom rail (palm facing up) and lift slowly until the desired height is reached.

Top-Down Bottom-Up Cordless Shade

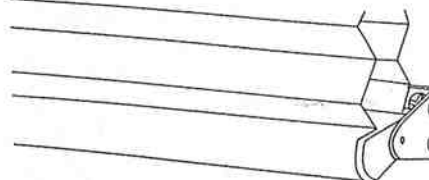
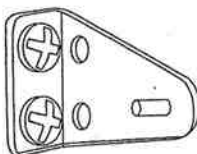
To raise and lower the shade from the bottom, follow the directions above.

To lower and raise the shade from the top: grip the middle rail handle and slowly pull straight down/up.

Step 6. Installing Hold-Down Brackets

Hold down brackets are provided for optional use. These brackets should be used only if the shade is to be in a permanently lowered position. With the shade fully lowered, make pencil marks at the outside ends of the bottom rail. Brackets should be lined up to the pencil marks and screwed into place using the 1/2" screws. Insert the pins protruding from the brackets into the holes on both ends of the bottom rail (see illustration).

Cellular & Semi-Cell Fabric Shades



CLEANING

The vinyl head rail and bottom rail can be wiped clean with a damp sponge. To clean the shade fabric, use a feather duster or vacuum lightly using the soft brush attachment.

REPLACEMENT PARTS

In the event that replacement parts are ever needed, you may call: 1-800-264-1190

Please be sure to provide the following information, if possible:

- The complete model or catalog number of your product
- A description of the product
- A description of the part needed

LIMITED LIFETIME WARRANTY

The enclosed product is warranted to the original residential retail purchaser as long as the product remains in the original window.

Covered:

Lifetime: Entire product against manufacturing defects (i.e. a flaw in the product design, materials, or workmanship that causes the product to no longer function)

3 years: Cords including internal cords such as those found in cordless blinds. 5 years: All fabric

Not Covered:

Normal Wear and Tear

Any product that fails due to: abuse • exposure to salt air • improper installation • accident • extraordinary use • improper operation • alterations • improper cleaning • misapplication • damage from pests/insects/pets • improper handling • misuse

Natural wood products that have: loss of color intensity • yellowing or cracking of plastic parts or foam wood product • variations in color, grain, or texture • warping of wood slats in high humidity areas

Costs associated with: product removal • transportation to and from the retailer • brand label removal • product remeasure • incidental or consequential damages • product reinstallation • shipping

In the event there are multiple blinds/shades in the same room, only the defective blind/shade will be replaced.

To Report Shipping Damage:

If damage occurred during shipping, call place of purchase and report within 7 calendar days or else you may be denied credit for your damaged product.

To Obtain Service:

If you suspect this product has a manufacturing defect in materials or workmanship:

1. Locate the sales receipt
2. Call place of purchase

Any unauthorized returns will not be accepted.

Warranty Remedy:

THIS SHALL BE YOUR SOLE REMEDY UNDER THIS LIMITED WARRANTY.

If this product is found to have a manufacturing defect in materials or workmanship, we will (at our discretion) do one of the following: repair the product • replace the product • refund the cost of the product

Colors vary from lot to lot and may not exactly match sample swatch or previous purchases. Discontinued items or color selections will be replaced with the closest equivalent current product.

YOUR RIGHTS UNDER STATE LAW:

This lifetime limited warranty gives you specific legal rights, and you may have other rights, which vary from state to state. Some states do not allow limitations on how long a warranty lasts, so the above limitations may not apply to you.

No agent, representative, dealer, or unauthorized employee has the authority to increase or alter the obligation of this warranty. This lifetime limited warranty supersedes any previous versions.