

Upgrade to the industry's most advanced Motor Program:  
**Motorization** features 2-way technology with superior value and innovation paired with a smart, seamless user interface.



## **RF 2W** 15 Channel Remote Control Programming Guide

### Specifications

- Up to 15 channels with 3V (CR2450) battery, magnetic holder included
- Channel 0 controls all shades assigned to remote; ability to hide extra channels
- Favorite position activated by quick touch of a button
- Locking feature prevent unwanted configuration changes

# ™ Motorization Table of Contents

Declarations	3
Safety Instructions	4
Remote Overview	5
Remote Functions	6
P1 Button Instructions	7
Initial Set-up	8
Adjust Limits	9
Favorite Position	10
Add or Remove Additional Remote	11
Adjust Motor Speed	12
Roller or Sheer Mode	13
Quick Index	14
Troubleshooting	14

## Declarations

### U.S. Radio Frequency FCC Compliance

This device complies with Part 15 of the FCC Rules. Operation is subject to the following two conditions:

- (1) This device may not cause harmful interference, and
- (2) This device must accept any interference received, including interference that may cause undesired operation.

This equipment has been tested and found to comply with the limits for a Class B digital device, pursuant to Part 15 of the FCC Rules. These limits are designed to provide reasonable protection against harmful interference in a residential installation. This equipment generates, uses, and can radiate radio frequency energy and, if not installed and used in accordance with the instructions, may cause harmful interference to radio communications. However, there is no guarantee that interference will not occur in a particular installation. If this equipment does cause harmful interference to radio or television reception, which can be determined by turning the equipment off and on, the user is encouraged to try to correct the interference by one or more of the following measures:

- Reorient or relocate the receiving antenna.
- Increase the separation between the equipment and receiver.
- Connect the equipment into an outlet on a circuit different from that to which the receiver is connected.
- Consult the dealer or an experienced radio/TV technician for help.

*Any Changes or modifications not expressly approved by the party responsible for compliance could void the user's authority to operate the equipment.*

### ISED RSS Warning:

This device complies with Innovation, Science and Economic Development Canada licence-exempt RSS standard(s). Operation is subject to the following two conditions: (1) this device may not cause interference, and (2) this device must accept any interference, including interference that may cause undesired operation of the device. Le présent appareil est conforme aux CNR d'ISED applicables aux appareils radio exempts de licence. L'exploitation est autorisée aux deux conditions suivantes: (1) l'appareil ne doit pas produire de brouillage, et (2) l'utilisateur de l'appareil doit accepter tout brouillage radioélectrique subi, même si le brouillage est susceptible d'en compromettre le fonctionnement.

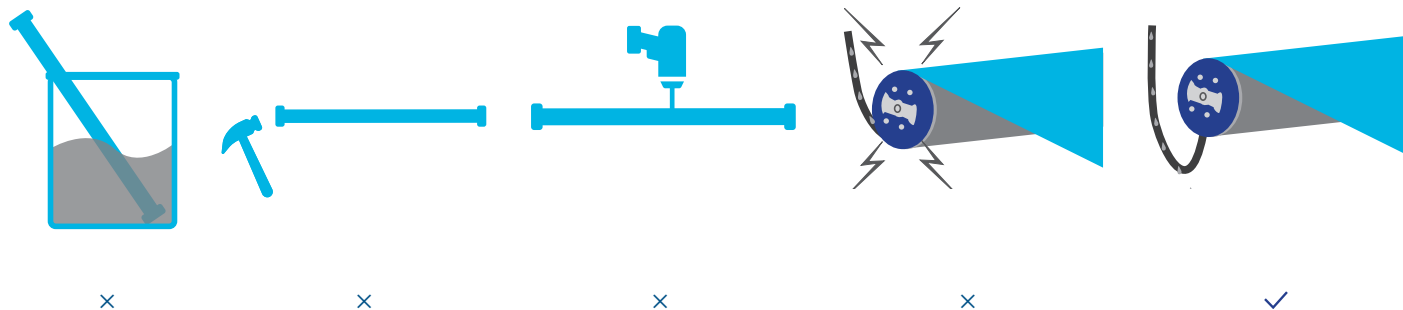
## Safety Instructions

### Attention

Never drop, knock, drill or submerge the motor. Keep the power cable in the proper position as shown below.

Read all safety instructions before installation.

Incorrect installation can lead to serious injury and will void manufacturer's liability and warranty.



### Important Safety Instructions

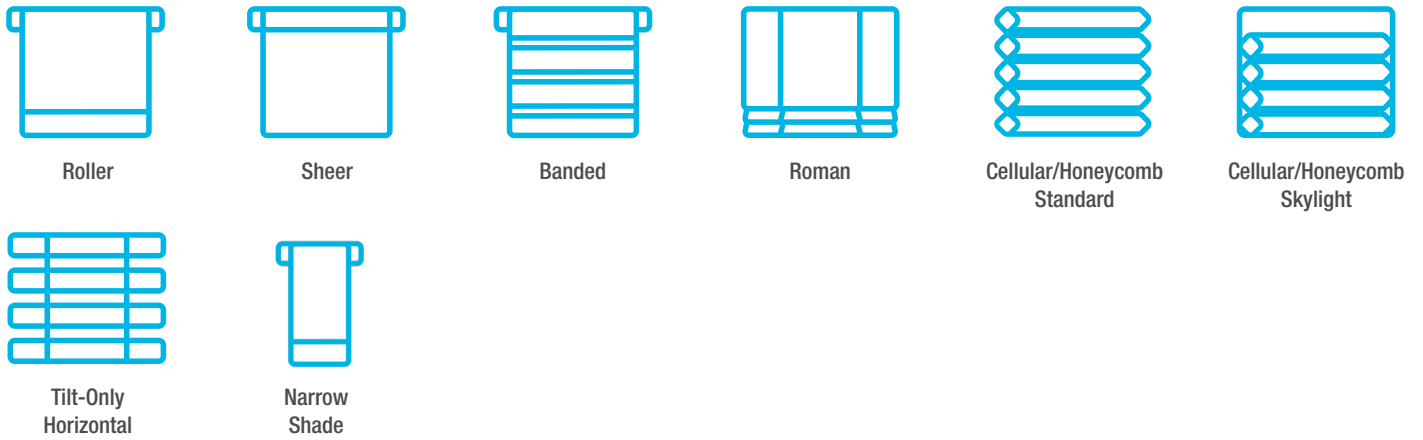
1. Do not expose motor to humid, damp, or extreme temperature conditions.
2. Do not drill into motor.
3. Do not cut the antenna. Keep it clear from metal objects.
4. Do not allow children to play with this device.
5. If the power cable or connector is damaged, do not use.
6. Ensure the correct crown and drive adaptor are used.
7. Ensure the power cable and aerial is clear and protected from moving parts.
8. Cable routed through walls should be properly isolated.
9. Motor is to be mounted in horizontal position only.
10. Before installation, remove unnecessary cords and disable equipment not needed for powered operation.
11. Installation and programming should be performed by a qualified professional. Use or modification outside the scope of these instructions may void warranty.



Do not dispose of in general waste.

Please recycle batteries and damaged electrical products appropriately.

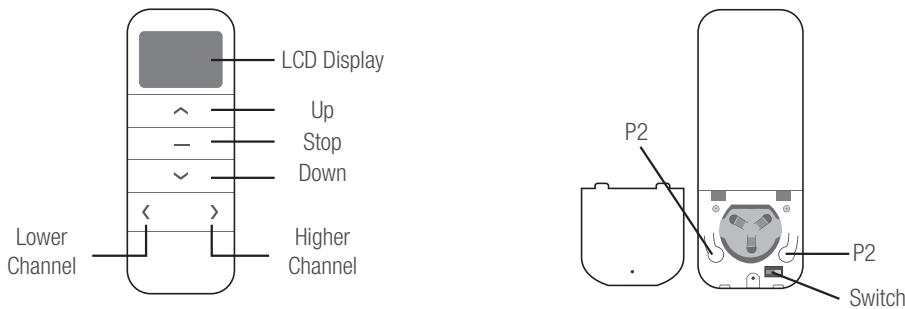
### 1. Fields of Application



### 2. Specification

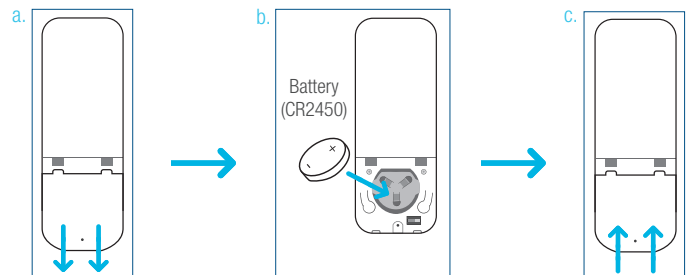
<b>Voltage</b>	3V (CR2450)
<b>Radio Frequency</b>	433.92 MHz Bi-directional
<b>Transmitting Power</b>	10 milliwatt
<b>Operating Temperature</b>	14°F to 122°F (-10°C to 50°C)
<b>RF Modulation</b>	FSK
<b>Lock Function</b>	Yes
<b>IP Rating</b>	IP20
<b>Transmission Distance</b>	up to 200m (outdoor)

### 3. Remote Button Instructions



### 4. Replace/Install CR2450 Battery

- Unscrew with the screwdriver then gently press down the cover.
- Install battery (CR2450) with positive (+) side facing up.
- Gently assemble the cover back and replace screw with screwdriver.

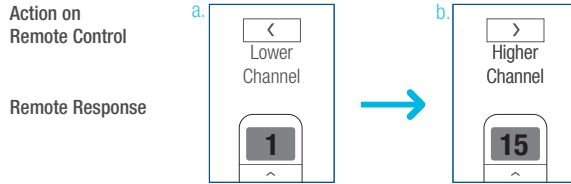


# Remote Function

## 1. Channel Options

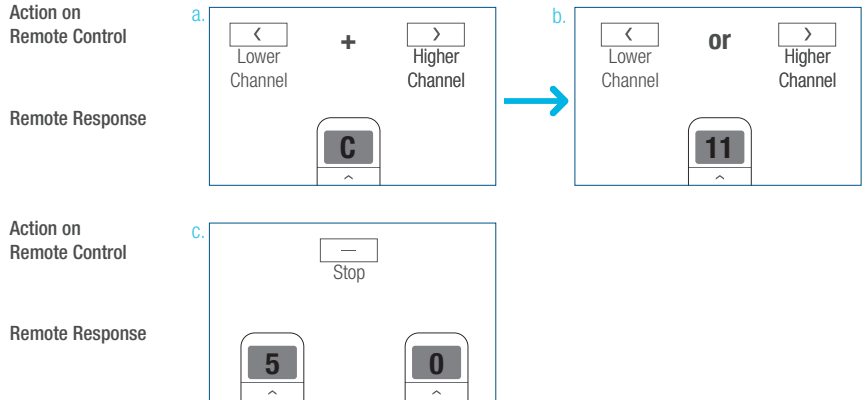
### Select A Channel

- Press “<” button on the remote to select a lower channel.
- Press “>” button on the remote to select a higher channel.



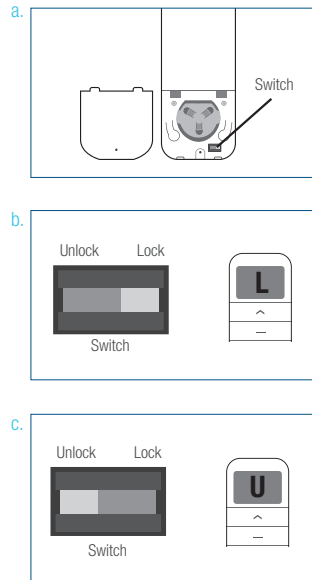
### Hide Unused Channels

- Press and Hold (about 3 sec) “<” and “>” buttons simultaneously until remote control displays “C” (channel).
- Press “<” or “>” button to select required quantity of channel (between 1 to 15).
- Press “Stop” button to confirm selection (the example shows a 5-channel selection). The LED will display “0” (OK) once to confirm selection.



## 2. Advanced Setting - Disable Limit Setting

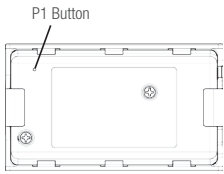
- Remove the cover from the backside of remote, the lock switch is in the right corner.
- Move the switch to the “Lock” position to disable the following commands, remote will show “L” (lock):
  - Change Motor Direction
  - Setting the Upper and Lower Limit
  - Adjust Limit
  - Roller Mode or Sheer Mode
- Move the switch to “Unlock” position to assess all remote functions, remote will show “U” (unlock).



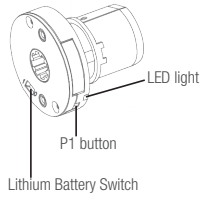
\*This advanced feature is intended to be used after all shade programming is completed. User Mode will prevent accidental or unintended changing of limits.

# P1 Button Instructions

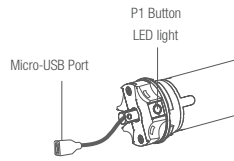
## 2. P1 Button Location



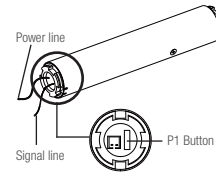
TILT



25B / 28B / 25BDC



35B



CEL

## 2. P1 Button Instruction

CEL and TILT motors DO NOT BEEP

### ① Test Motor

Happening as you press for 1 second



Press P1  
Less than 1 sec.

when released

Motor Response: Wakes & Runs

### ② Activate Pairing Mode

Happening as you press for 2 seconds



Press P1  
Approx. 2 sec.

Until Shade: Jog x1

when released

Motor Response: Beep x1

### ③ Sleep Mode

Happening as you press for 6 seconds



Press P1  
Approx. 6 sec.

Until Shade: Jog x2

when released

Motor Response: Beep x2

### ④ Reverse Direction

Happening as you press for 10 seconds



Press P1  
Approx. 10 sec.

Until Shade: Jog x3

when released

Motor Response: Beep x3

### ⑤ Reset To Factory Settings

Happening as you press for 14 seconds



Press P1  
Approx. 14 sec.

Until Shade: Jog x4

when released

Motor Response: Beep x4

# Initial Set-up

## 1. Pair / Unpair Remote Control

- Press **“P1” button** (about 2 sec) on the motor head until motor jog x1 and beep x1.
- In the next 10 secs, press and hold **“Stop”** button on the remote control until motor jog x2 and beep x3.

\* Repeat the same procedure to unpair remote control.

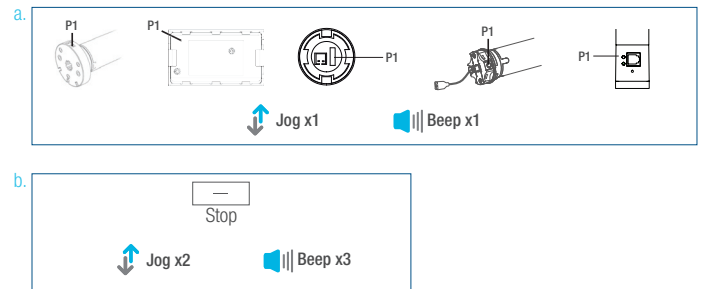
Action on Motor

Motor Response

Action on Remote Control

Motor Response

### CEL and TILT motors DO NOT BEEP



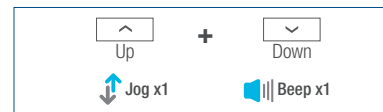
## 2. Change Motor Direction (if necessary)

Press **“Up”** or **“Down”** button to check if the shade moves in the desired direction.

If you need to reverse the direction, press and hold (about 2 sec) **“Up”** and **“Down”** buttons simultaneously until motor jog x1 and beep x1.

Action on Remote Control

Motor Response



\*The operation is only valid when there are no limits. If the motor has already set the upper and lower limit, then you can only switch direction by pressing P1 button (See P1 button instructions).

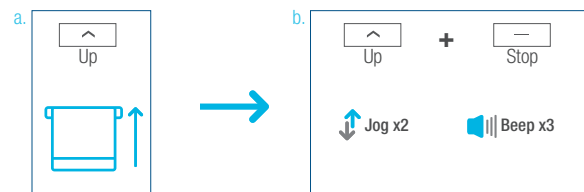
## 3. Setting the Upper and Lower Limits

### Set Upper Limit

- Press **“Up”** button to raise the shade, then press **“Stop”** button when it is in the desired upper limit.
- Press and hold (about 5 sec) **“Up”** and **“Stop”** buttons simultaneously until motor jog x2 and beep x3.

Action on Remote Control

Motor Response

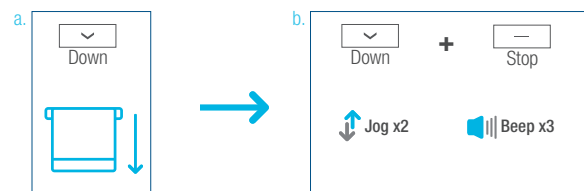


### Set Lower Limit

- Press **“Down”** button to lower the shade, then press **“Stop”** button when it is in the desired lower limit.
- Press and hold (about 5 sec) **“Down”** and **“Stop”** buttons simultaneously until motor jog x2 and beep x3.

Action on Remote Control

Motor Response



\*If you exit the limit setting status before you finish the limit settings, the motor will take the previous existing limits.



# Adjust Limits

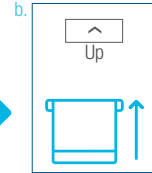
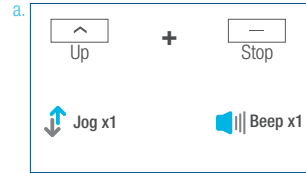
## 1. Adjust the Upper Limit

a. Press and hold (about 5 sec) **“Up”** and **“Stop”** buttons simultaneously until motor jog x1 and beep x1.

b. Use **“Up”** button to raise the shade to the desired highest position, and use **“Up”** or **“Down”** button to do the final adjustment if necessary.

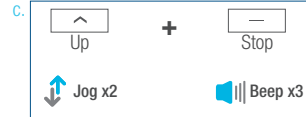
c. Press and hold (about 5 sec) **“Up”** and **“Stop”** buttons simultaneously until motor jog x2 and beep x3.

Action on Remote Control



Motor Response

Action on Remote Control



Motor Response

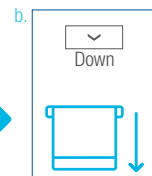
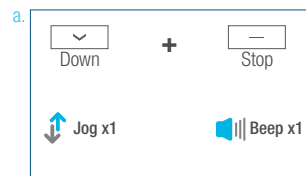
## 2. Adjust the Lower Limit

a. Press and hold (about 5 sec) **“Down”** and **“Stop”** buttons simultaneously until motor jog x1 and beep x1.

b. Use **“Down”** button to lower the shade to the desired lowest position, and use **“Up”** or **“Down”** button to do the final adjustment if necessary.

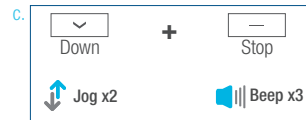
c. Press and hold (about 5 sec) **“Down”** and **“Stop”** buttons simultaneously until motor jog x2 and beep x3.

Action on Remote Control



Motor Response

Action on Remote Control

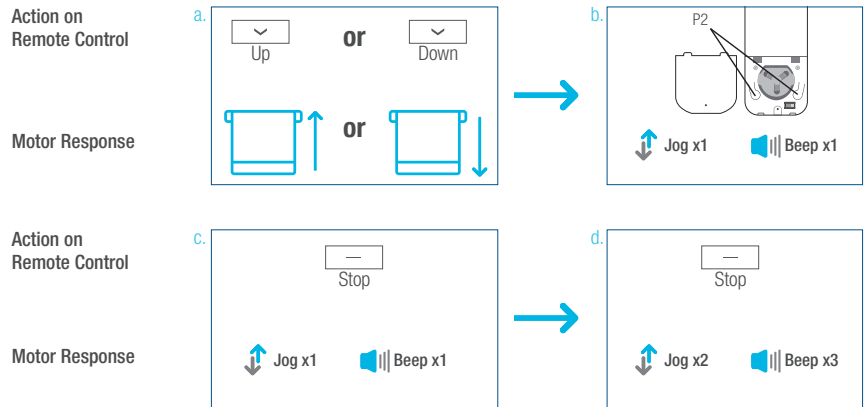


Motor Response

# Favorite Position

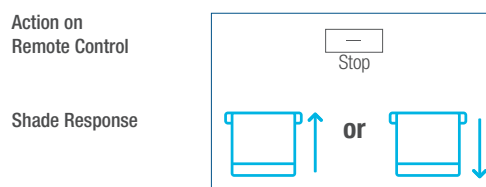
## 1. Set Favorite Position

- a. Use **“Up”** or **“Down”** button to move the shade to desired Favorite position.
- b. Press one **“P2”** button on the back of remote control until motor jog x1 and beep x1.
- c. Press **“Stop”** button until motor jog x1 and beep x1.
- d. Once more, press **“Stop”** button until motor jog x2 and beep x3.



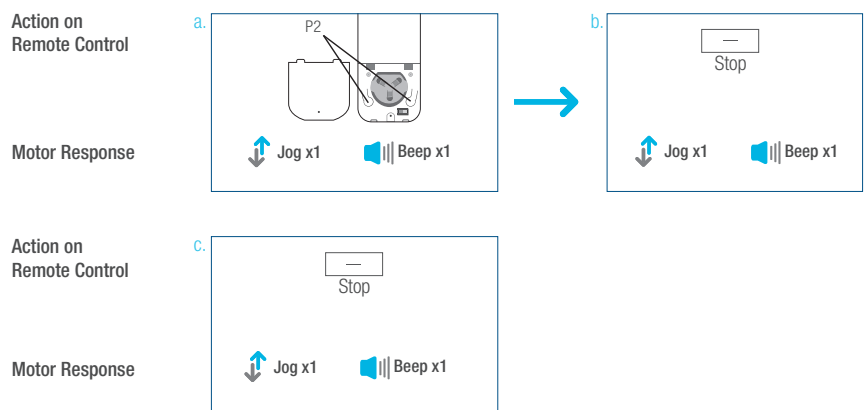
## 2. Send Shade to Favorite Position

Press and hold (about 2 sec) **“Stop”** button, motor will move to Favorite position.



## 3. Delete Favorite Position

- a. Press one **“P2”** button until motor jog and beep x1.
- b. Press **“Stop”** button until motor jog and beep x1.
- c. Once more, press **“Stop”** button until motor jog x1 and long beep x1.



## Add or Remove Additional Remote

### 1. Using Current Remote Control

a. On the **current** remote control, press one “P2” button until motor jog x1 and beep x1.

b. Once more, on the **current** remote control, press one “P2” button until motor jog x1 and beep x1.

c. On the **New** remote control, press one “P2” button until motor jog x2 and beep x3.

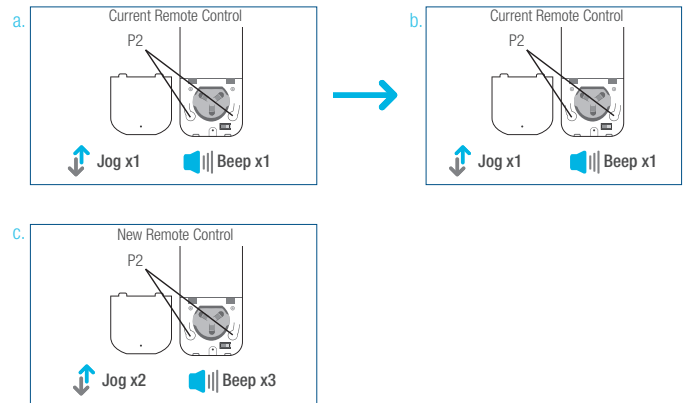
\*Repeat the same procedure to remove additional remote control.

Action on Remote Control

Motor Response

Action on Remote Control

Motor Response



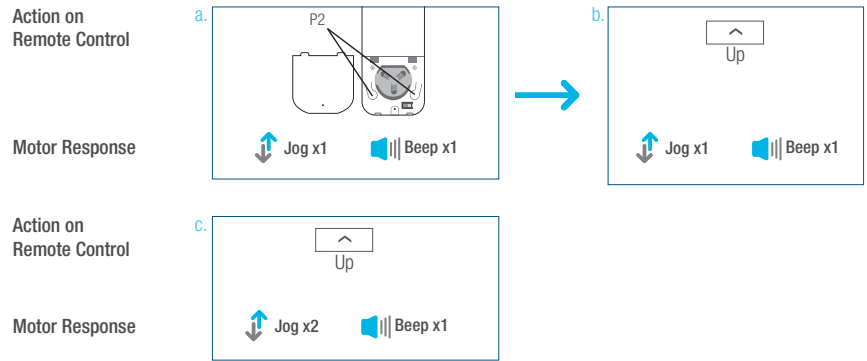
### 2. New Remote Control

Follow instructions on page 8 under the section **Pair / Unpair Remote Control**

# Adjust Motor Speed

## 1. Acceleration Speed

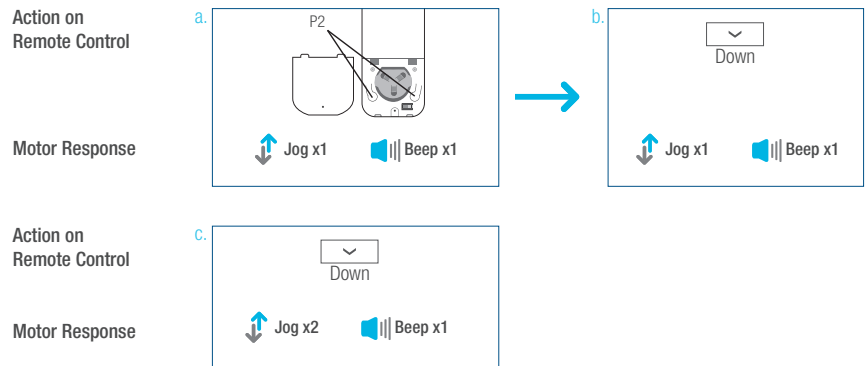
- a. Press one “P2” button until motor jog x1 and beep x1.
- b. Press “Up” button until motor jog x1 and beep x1.
- c. Once more, press “Up” button until motor jog x2 and beep x1.



## 2. Deceleration Speed

- a. Press one “P2” button until motor jog x1 and beep x1.
- b. Press “Down” button until motor jog x1 and beep x1.
- c. Once more, press “Down” button until motor jog x2 and beep x1.

\*If the motor has no response, it already has a Maximum or Minimum speed.



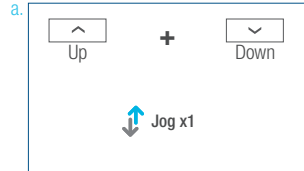
## Roller or Sheer Mode

### 1. Roller Shade Mode - continue movement after a short press - Default Mode

a. Press and hold (about 5 sec) “Up” and “Down” buttons simultaneously until motor jog x1.

b. Press and hold (about 2 sec) “Stop” button until motor jog x2 and beep x3.

Action on Remote Control



Motor Response

Action on Remote Control



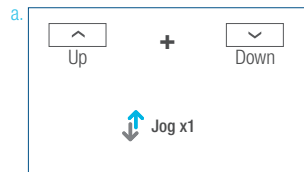
Motor Response

### 2. Sheer Shade Mode - jog movement after a short press (continue movement after a long press)

a. Press and hold (about 5 sec) “Up” and “Down” buttons simultaneously until motor jog x1.

b. Press and hold (about 2 sec) “Stop” button until motor jog x1 and beep x1.

Action on Remote Control



Motor Response

Action on Remote Control



Motor Response

## Quick Index

Settings	Steps
1 Pairing	P1 (hold down for 2s) > Stop (hold down for 2s)
2 Switch Rotating Direction	Up + Down (hold down for 2s)
3 Setting Upper & Lower Limits	Upper Limit: Up (hold down for 2s) > Up + Stop (hold down for 2s) Lower Limit: Down (hold down for 2s) > Down + Stop (hold down for 2s)
4 Add / Remove Favorite Position	P2 > Stop > Stop
5 Roller Mode & Sheer Mode Switch	Up + Down (hold down for 5s) > Stop
6 Adjust Limits	Upper Limit: Up + Stop (hold down for 5s) > Up or Down > Up + Stop (hold down for 2s) Lower Limit: Down + Stop (hold down for 5s) > Up or Down > Down + Stop (hold down for 2s)
7 Pair / Unpair Additional Emitter	P2 (existing) > P2 (existing) > P2 (new)
8 Speed Regulation	Acceleration: P2 > Up > Up Deceleration: P2 > Down > Down

## Troubleshooting

Issues	Possible Causes	Solution
The motor has no response	Battery in motor is depleted	Recharge with compatible AC adaptor and check connection and positioning of solar PV panel
	Insufficient charging from Solar PV Panel	Check connection and orientation of solar PV panel
	Remote control battery is discharged	Replace battery
	Battery is inserted incorrectly into remote control	Check battery polarity
	Radio interference / shielding	Ensure remote control and the antenna on the motor are positioned away from metal objects
	Receiver distance is too far from Remote Control	Move remote control to a closer position
	Power failure	Check power supply to motor is connected and active
	Incorrect wiring	Check that wiring is connected correctly (refer to motor installation instructions)
Motor beeps 10 times when in use	Battery voltage is low / PV (solar panel issue)	Recharge with AC adapter or check connection and positioning of solar PV panel
Cannot program a single motor (multiple motors respond)	Multiple motors are paired to the same channel.	Always reserve an individual channel for programming functions
		SYSTEM BEST PRACTICE - Provide an extra 15 channel remote in your multi-motor projects that provides individual control for each motor for programming purposes
		Place all other motors into sleep mode (ref to <b>P1</b> button instructions)

Upgrade to the industry's most advanced Motor Program:

**Motorization** features 2-way technology with superior value and innovation paired with a smart, seamless user interface.



## **RF 2W** 15 Channel TDBU Remote Control Programming Guide

### Specifications

- Specially designed for patented TDBU honeycomb shades
- Up to 15 channels with 3V (CR2450) battery, magnetic holder included
- Channel 0 controls all shades assigned to remote; ability to hide extra channels
- Favorite position activated by quick touch of a button
- Locking feature prevent unwanted configuration changes

# ™ Motorization Table of Contents

Declarations	3
Safety Instructions	4
TDBU Remote Overview	5
TDBU Remote Function	6
P1 Button Instructions	7
Initial Set-up	8
Adjust Limits	9
Favorite Position	10
Add or Remove Additional Remote	11
Adjust Motor Speed	12
Roller or Sheer Mode	13
Quick Index	14
Troubleshooting	14



## Declarations

### U.S. Radio Frequency FCC Compliance

This device complies with Part 15 of the FCC Rules. Operation is subject to the following two conditions:

- (1) This device may not cause harmful interference, and
- (2) This device must accept any interference received, including interference that may cause undesired operation.

This equipment has been tested and found to comply with the limits for a Class B digital device, pursuant to Part 15 of the FCC Rules. These limits are designed to provide reasonable protection against harmful interference in a residential installation. This equipment generates, uses, and can radiate radio frequency energy and, if not installed and used in accordance with the instructions, may cause harmful interference to radio communications. However, there is no guarantee that interference will not occur in a particular installation. If this equipment does cause harmful interference to radio or television reception, which can be determined by turning the equipment off and on, the user is encouraged to try to correct the interference by one or more of the following measures:

- Reorient or relocate the receiving antenna.
- Increase the separation between the equipment and receiver.
- Connect the equipment into an outlet on a circuit different from that to which the receiver is connected.
- Consult the dealer or an experienced radio/TV technician for help.

*Any Changes or modifications not expressly approved by the party responsible for compliance could void the user's authority to operate the equipment.*

### ISED RSS Warning:

This device complies with Innovation, Science and Economic Development Canada licence-exempt RSS standard(s). Operation is subject to the following two conditions: (1) this device may not cause interference, and (2) this device must accept any interference, including interference that may cause undesired operation of the device. Le présent appareil est conforme aux CNR d'ISED applicables aux appareils radio exempts de licence. L'exploitation est autorisée aux deux conditions suivantes: (1) l'appareil ne doit pas produire de brouillage, et (2) l'utilisateur de l'appareil doit accepter tout brouillage radioélectrique subi, même si le brouillage est susceptible d'en compromettre le fonctionnement.

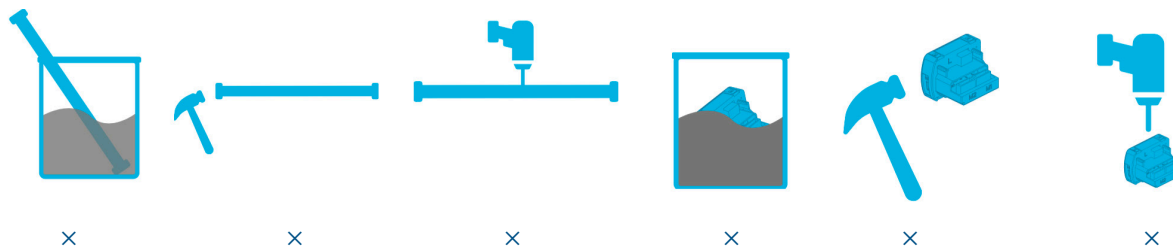
## Safety Instructions

### Attention

Never drop, knock, drill or submerge the motor and RF receiver.

Read all safety instructions before installation.

Incorrect installation can lead to serious injury and will void manufacturer's liability and warranty.



### Important Safety Instructions

1. Do not expose motor to humid, damp, or extreme temperature conditions.
2. Do not drill into motor.
3. Do not cut the antenna. Keep it clear from metal objects.
4. Do not allow children to play with this device.
5. If the power cable or connector is damaged, do not use.
6. Ensure the correct crown and drive adaptor are used.
7. Ensure the power cable and aerial is clear and protected from moving parts.
8. Cable routed through walls should be properly isolated.
9. Motor is to be mounted in horizontal position only.
10. Before installation, remove unnecessary cords and disable equipment not needed for powered operation.
11. Installation and programming should be performed by a qualified professional. Use or modification outside the scope of these instructions may void warranty.



Do not dispose of in general waste.

Please recycle batteries and damaged electrical products appropriately.

# AMP™ TDBU Remote Overview

## 1. Fields of Application



Cellular/Honeycomb  
TDBU

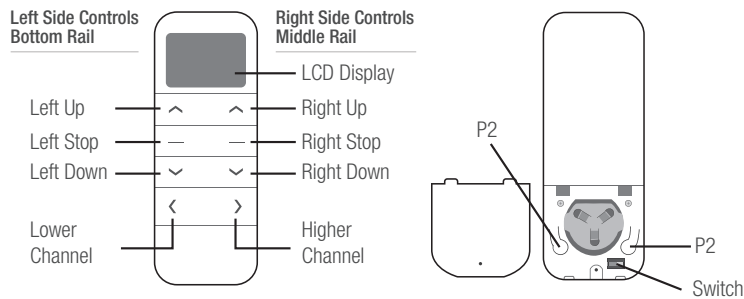


Cellular/Honeycomb  
Day/Night

## 2. Specification

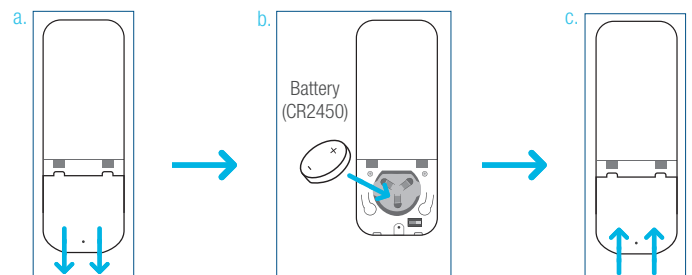
<b>Voltage</b>	3V (CR2450)
<b>Radio Frequency</b>	433.92 MHz Bi-directional
<b>Transmitting Power</b>	10 milliwatt
<b>Operating Temperature</b>	14°F to 122°F (-10°C to 50°C)
<b>RF Modulation</b>	FSK
<b>Lock Function</b>	Yes
<b>IP Rating</b>	IP20
<b>Transmission Distance</b>	up to 200m (outdoor)

## 3. Remote Button Instructions



## 4. Replace/Install CR2450 Battery

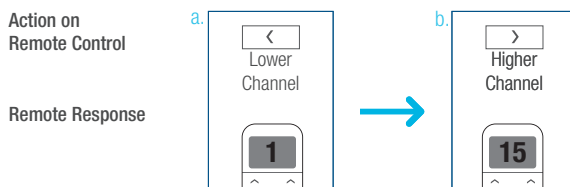
- Unscrew with the screwdriver then gently press down the cover.
- Install battery (CR2450) with positive (+) side facing up.
- Gently assemble the cover back and replace screw with screwdriver.



## 1. Channel Options

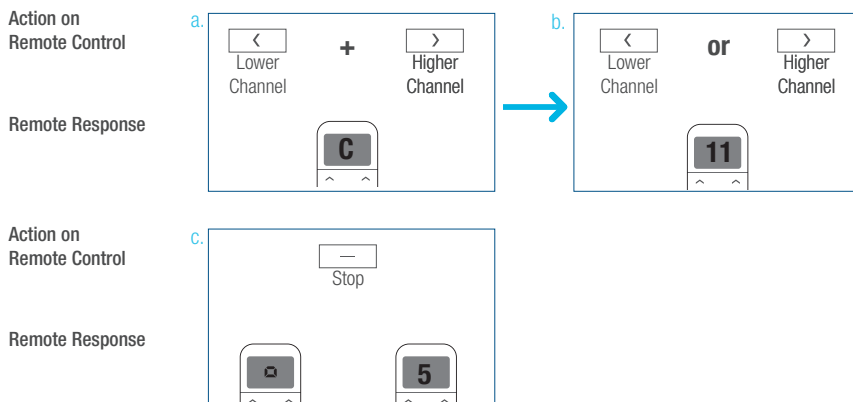
### Select A Channel

- Press “<” button on the remote to select a lower channel.
- Press “>” button on the remote to select a higher channel.



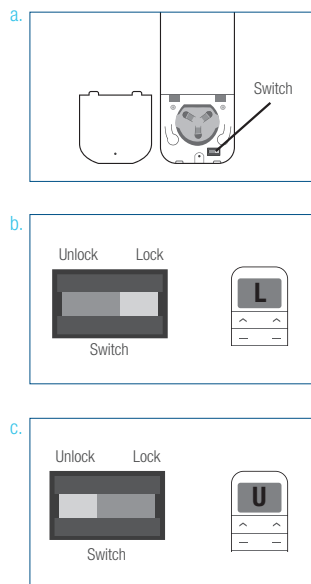
### Hide Unused Channels

- Press and Hold (about 3 sec) “<” and “>” buttons simultaneously until remote control displays “C” (channel).
- Press “<” or “>” button to select required quantity of channel (between 1 to 15).
- Press “Stop” button to confirm selection (the example shows a 5-channel selection). The LCD will display “o” (OK) once to confirm selection.



## 2. Advanced Setting - Disable Limit Setting

- Remove the cover from the backside of remote, the lock switch is in the right corner.
- Move the switch to the “Lock” position to disable the following commands, remote will show “L” (lock):
  - Change Motor Direction
  - Setting the Upper and Lower Limit
  - Adjust Limit
  - Roller Mode or Sheer Mode
- Move the switch to “Unlock” position to assess all remote functions, remote will show “U” (unlock).



\*This advanced feature is intended to be used after all shade programming is completed. User Mode will prevent accidental or unintended changing of limits.

# P1 Button Instructions

## 2. P1 Button Location



TDBU honeycomb shades

## 2. P1 Button Instruction

### ① Test Motor

Happening as you press for 1 second



Press P1  
Less than 1 sec.

### ② Activate Pairing Mode

Happening as you press for 2 seconds



Press P1  
Approx. 2 sec.

Until Shade:  Jog x1

### ③ Sleep Mode

Happening as you press for 6 seconds



Press P1  
Approx. 6 sec.

Until Shade:  Jog x2

### ④ Reverse Motor 1 with Motor 2

Happening as you press for 10 seconds



Press P1  
Approx. 10 sec.

Until Shade:  Jog x3

### ⑤ Reset To Factory Settings

Happening as you press for 14 seconds



Press P1  
Approx. 14 sec.

Until Shade:  Jog x4

# Initial Set-up

## 1. Pair / Unpair Remote Control

- Press **"P1"** button (about 2 sec) on the End Cap as shown until motor jog x1.
- In the next 10 secs, press and hold **Left "Stop"** button on the remote control until motor jog x2.

\* Repeat the same procedure to unpair remote control.

\* All setup needs to be done using **LEFT SIDE** of the remote.

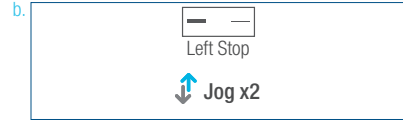
Action on Endcap

Motor Response



Action on Remote Control

Motor Response



## 2. Change Motor Direction (if necessary)

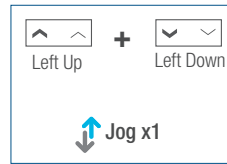
Press **Left "Up"** or **Left "Down"** button to check if the shade moves in the desired direction.

If you need to reverse the direction, press and hold (about 2 sec) **Left "Up"** and **Left "Down"** buttons simultaneously until motor jog x1.

\*The operation is only valid when there are no limits.

Action on Remote Control

Motor Response



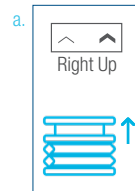
## 3. Setting the Upper and Lower Limits

### Set Upper Limit

- Press **Right "Up"** button to raise the Middle Rail, then press **Right "Stop"** button when it is in the desired upper limit.
- Press **Left "Up"** button to raise the Bottom Rail, then press **Left "Stop"** button when it is in the desired upper limit.
- Press and hold (about 2 sec) **Left "Up"** and **Left "Stop"** buttons simultaneously until motor jog x2.

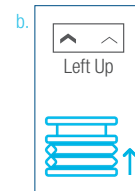
Action on Remote Control

Middle Rail Response



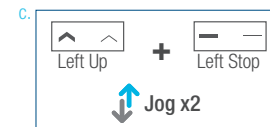
Action on Remote Control

Bottom Rail Response



Action on Remote Control

Motor Response

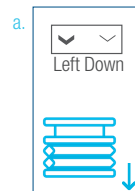


### Set Lower Limit

- Press **Left "Down"** button to lower the Bottom Rail, then press **Left "Stop"** button when it is in the desired lower limit.
- Press **Right "Down"** button to lower the Middle Rail, then press **Right "Stop"** button when it is in the desired lower limit.
- Press and hold (about 2 sec) **Left "Down"** and **Left "Stop"** buttons simultaneously until motor jog x2.

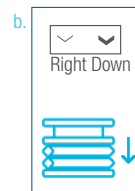
Action on Remote Control

Bottom Rail Response



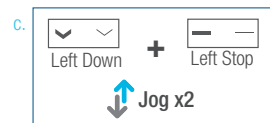
Action on Remote Control

Middle Rail Response



Action on Remote Control

Motor Response

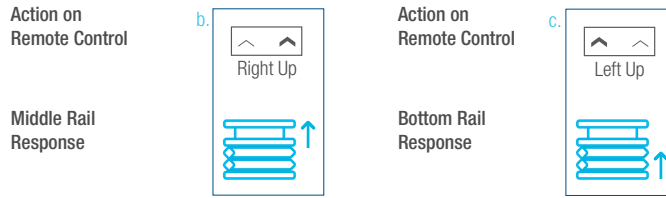
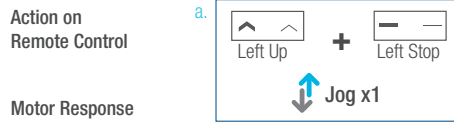


Factory Mode Complete  
User Mode Begins

# Adjust Limits

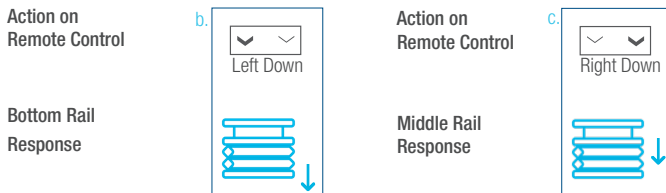
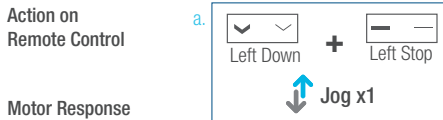
## 1. Adjust the Upper Limit

- a. Press and hold (about 5 sec) **Left “Up”** and **Left “Stop”** buttons simultaneously until motor jog x1.
- b. Use **Right “Up”** button to raise the Middle Rail, then press **Right “Stop”** button when it is in the new desired upper limit.
- c. Press **Left “Up”** button to raise the Bottom Rail, then press **Left “Stop”** button when it is in the new desired upper limit.
- d. Press and hold (about 2 sec) **Left “Up”** and **Left “Stop”** buttons simultaneously until motor jog x2.



## 2. Adjust the Lower Limit

- a. Press and hold (about 5 sec) **Left “Down”** and **Left “Stop”** buttons simultaneously until motor jog x1.
- b. Use **Left “Down”** button to lower the Bottom Rail, then press **Left “Stop”** button when it is in the new desired lower limit.
- c. Press **Right “Down”** button to lower the Middle Rail, then press **Right “Stop”** button when it is in the new desired lower limit.
- d. Press and hold (about 2 sec) **Left “Down”** and **Left “Stop”** buttons simultaneously until motor jog x2.

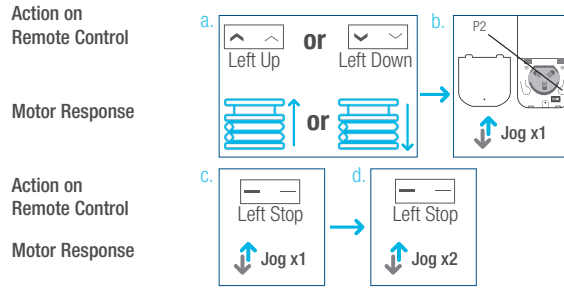


\*If you exit the limit setting status before you finish the limit settings, the motor will take the previous existing limits.

# Favorite Position

## 1. Set Favorite Position

- a. Use **Left “Up”** or **Left “Down”** button to move the shade to desired Favorite position.
- b. Press **Right “P2”** button on the back of remote control until motor jog x1.
- c. Press and hold (about 2 sec) **Left “Stop”** button until motor jog x1.
- d. Once more, press and hold (about 2 sec) **Left “Stop”** button until motor jog x2.



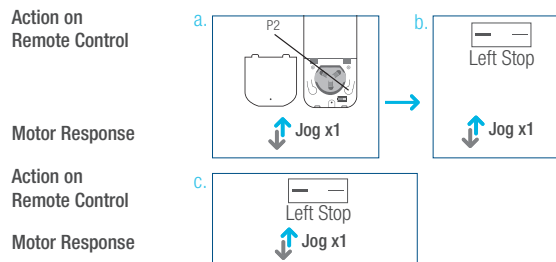
## 2. Send Shade to Favorite Position

Press and hold (about 2 sec) **Left “Stop”** button, motor will move to Favorite position.



## 3. Delete Favorite Position

- a. Press **Right “P2”** button until motor jog x1.
- b. Press and hold (about 2 sec) **Left “Stop”** button until motor jog x1.
- c. Once more, press and hold (about 2 sec) **Left “Stop”** button until motor jog x1.





## Add or Remove Additional Remote

### 1. Using Current Remote Control

- a. On the **current** remote control, press **Right “P2”** button until motor jog x1.
- b. Once more, on the **current** remote control, press **Right “P2”** button until motor jog x1.
- c. On the **New** remote control, press **Right “P2”** button until motor jog x2.

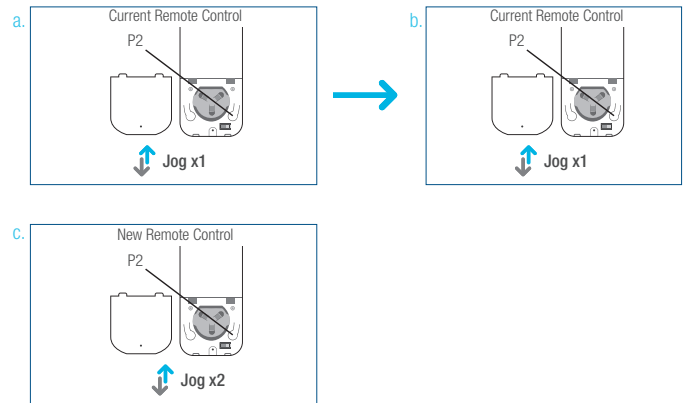
\*Repeat the same procedure to remove additional remote control.

Action on Remote Control

Motor Response

Action on Remote Control

Motor Response



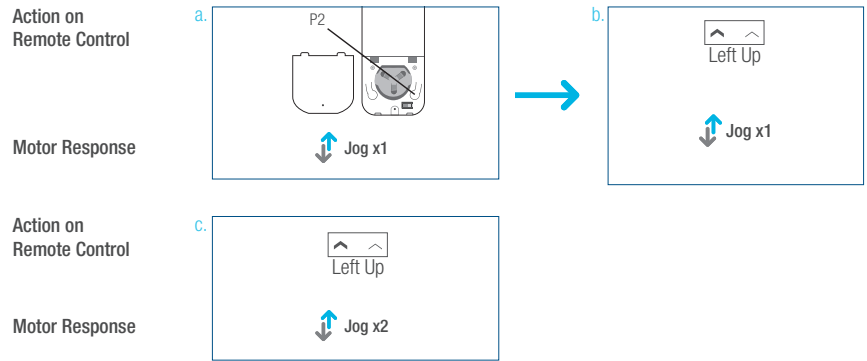
### 2. New Remote Control

Follow instructions under the section 1.  
**Pair / Unpair Remote Control**

# Adjust Motor Speed

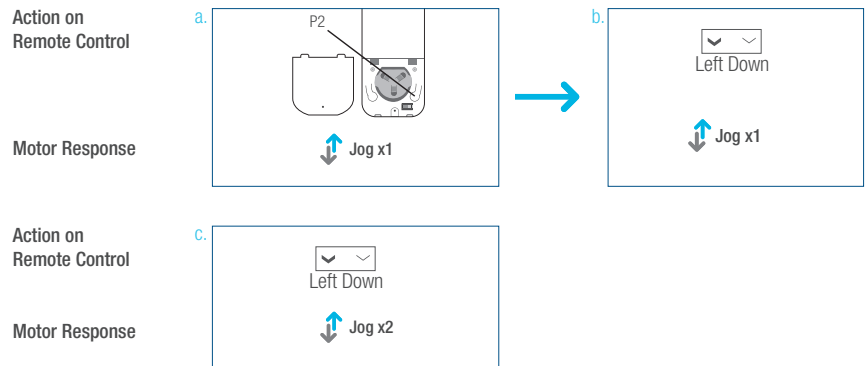
## 1. Acceleration Speed

- a. Press **Right “P2”** button until motor jog x1.
- b. Press **Left “Up”** button until motor jog x1.
- c. Once more, press **Left “Up”** button until motor jog x2.



## 2. Deceleration Speed

- a. Press **Right “P2”** button until motor jog x1.
- b. Press **Left “Down”** button until motor jog x1.
- c. Once more, press **Left “Down”** button until motor jog x2.



\*If the motor has no response, it already has a Maximum or Minimum speed.

## Roller or Sheer Mode

### 1. Roller Shade Mode - continue movement after a short press - Default Mode

a. Press and hold (about 5 sec) **Left “Up”** and **Left “Down”** buttons simultaneously until motor jog x1.

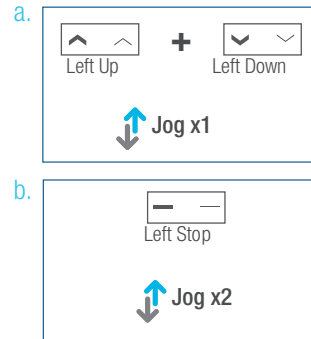
b. Press and hold (about 2 sec) **Left “Stop”** button until motor jog x2.

Action on Remote Control

Motor Response

Action on Remote Control

Motor Response



### 2. Sheer Shade Mode - jog movement after a short press (continue movement after a long press)

a. Press and hold (about 5 sec) **Left “Up”** and **“Left Down”** buttons simultaneously until motor jog x1.

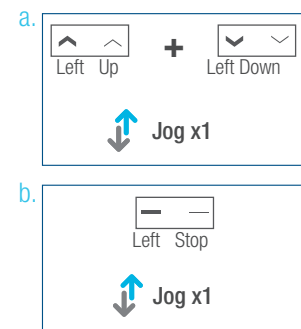
b. Press and hold (about 2 sec) **Left “Stop”** button until motor jog x1.

Action on Remote Control

Motor Response

Action on Remote Control

Motor Response



## Quick Index

Settings	Steps
1 Pairing	P1 (hold down for 2s) > Left Stop (hold down for 2s)
2 Switch Rotating Direction	Left Up + Left Down (hold down for 2s)
3 Setting Upper & Lower Limits	Upper Limit: Up (hold down for 2s) > Left Up + Left Stop (hold down for 2s) Lower Limit: Down (hold down for 2s) > Left Down + Left Stop (hold down for 2s)
4 Add / Remove Favorite Position	P2 > Left Stop > Left Stop
5 Roller Mode & Sheer Mode Switch	Left Up + Left Down (hold down for 5s) > Stop
6 Adjust Limits	Upper Limit: Left Up + Left Stop (hold down for 5s) > Up or Down > Left Up + Left Stop (hold down for 2s) Lower Limit: Left Down + Left Stop (hold down for 5s) > Up or Down > Left Down + Left Stop (hold down for 2s)
7 Pair / Unpair Additional Emitter	P2 (existing) > P2 (existing) > P2 (new)
8 Speed Regulation	Acceleration: P2 > Left Up > Left Up Deceleration: P2 > Left Down > Left Down

## Troubleshooting

The motor has no response	External battery pack is depleted	Recharge with compatible AC adaptor and check connection and positioning of solar PV panel
	Insufficient charging from Solar PV Panel	Check connection and orientation of solar PV panel
	Remote control battery is discharged	Replace battery
	Battery is inserted incorrectly into remote control	Check battery polarity
	Radio interference / shielding	Ensure remote control and the antenna on the motor are positioned away from metal objects
	Receiver distance is too far from Remote Control	Move remote control to a closer position
	Power failure	Check power supply to motor is connected and active
	Incorrect wiring	Check that wiring is connected correctly (refer to motor installation instructions)
Cannot program a single motor (multiple motors respond)	Multiple motors are paired to the same channel.	Always reserve an individual channel for programming functions
		SYSTEM BEST PRACTICE - Provide an extra 15 channel remote in your multi-motor projects that provides individual control for each motor for programming purposes
		Place all other motors into sleep mode (ref to <b>P1</b> button instructions)

## Declarations

### U.S. Radio Frequency FCC Compliance

This device complies with Part 15 of the FCC Rules. Operation is subject to the following two conditions:

- (1) This device may not cause harmful interference, and
- (2) This device must accept any interference received, including interference that may cause undesired operation.

This equipment has been tested and found to comply with the limits for a Class B digital device, pursuant to Part 15 of the FCC Rules. These limits are designed to provide reasonable protection against harmful interference in a residential installation. This equipment generates, uses, and can radiate radio frequency energy and, if not installed and used in accordance with the instructions, may cause harmful interference to radio communications. However, there is no guarantee that interference will not occur in a particular installation. If this equipment does cause harmful interference to radio or television reception, which can be determined by turning the equipment off and on, the user is encouraged to try to correct the interference by one or more of the following measures:

- Reorient or relocate the receiving antenna.
- Increase the separation between the equipment and receiver.
- Connect the equipment into an outlet on a circuit different from that to which the receiver is connected.
- Consult the dealer or an experienced radio/TV technician for help.

*Any Changes or modifications not expressly approved by the party responsible for compliance could void the user's authority to operate the equipment.*

### ISED RSS Warning:

This device complies with Innovation, Science and Economic Development Canada licence-exempt RSS standard(s). Operation is subject to the following two conditions: (1) this device may not cause interference, and (2) this device must accept any interference, including interference that may cause undesired operation of the device. Le présent appareil est conforme aux CNR d'ISED applicables aux appareils radio exempts de licence. L'exploitation est autorisée aux deux conditions suivantes: (1) l'appareil ne doit pas produire de brouillage, et (2) l'utilisateur de l'appareil doit accepter tout brouillage radioélectrique subi, même si le brouillage est susceptible d'en compromettre le fonctionnement.

### FCC SAR Warning:

RF Exposure Information (SAR): The SAR limit of USA (FCC) is 1.6W/Kg averaged over one gram of tissue.

Product Type: AMP Bridge (FCC ID: 2AU29AMPWFIFUSB) has also been tested against this SAR limit. The device was tested for typical body-worn operations to keep the AMP Bridge at least 5mm from the body. When worn on body must be correct back clip for this product, use of non-approved accessories may result in exposure levels which exceed the uncontrolled environmental RF exposure limits.

### ISED SAR Warning:

The SAR limit of IC is 1.6W/Kg averaged over one gram of tissue.

Product Type: AMP Bridge, model number: AMP USB Bridge Wifi and RF (IC: 25624-AMPWFIFI) has also been tested against this SAR limit. The device was tested for typical body-worn operations to keep the AMP Bridge at least 5mm from the body. When worn on body must be correct back clip for this product, use of non-approved accessories may result in exposure levels which exceed the uncontrolled environmental RF exposure limits.

Le SAR de IC est limité à 1.6w / kg, avec une moyenne par gramme. Produits Type: AMP Bridge, type: AMP USB Bridge Wifi and RF (IC: 25624-AMPWFIFI) a également été testé pour la limite SAR. Ce dispositif est utilisé pour tester des opérations d'usage corporelle typiques et des opérations en direction du Haut de physique, de manière à maintenir une distance d' au moins 5mm entre le AMP Bridge et le visage. Osure.'

# AMP™ Bridge Quick Start Guide

Product Certification   



AMP USB Bridge allows the user to link their motorized Shades, Blinds, and Draperies into a Wi-Fi network enabling control via smart APP and interaction with other IoT products.

## Step 1

Please scan the QR Code below to download the app.



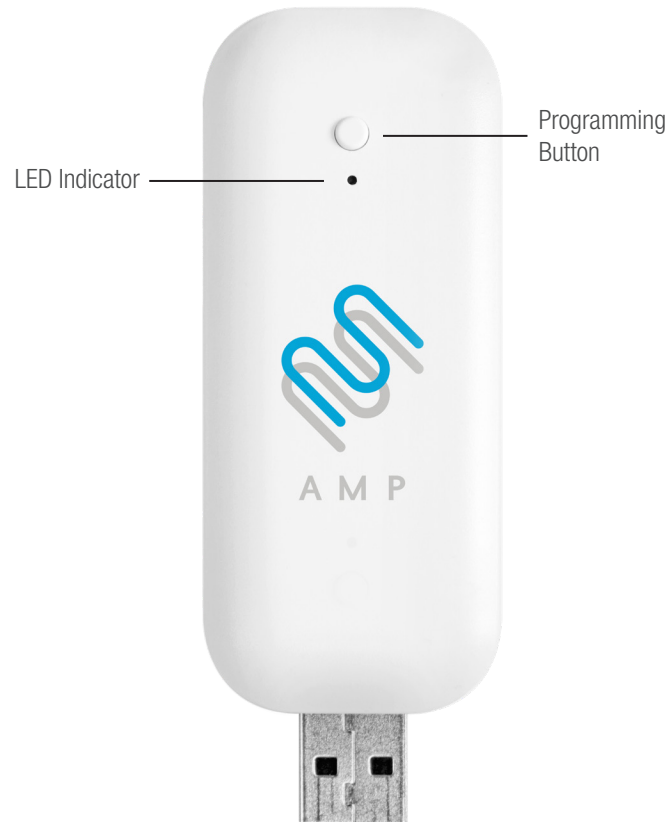
## Step 2

Please scan the QR Code below to learn more about linking the AMP USB Bridge with your home Wi-Fi router, setting up the AMP APP, and establishing a connection with other IoT applications.



## Product Parameter

<b>Input Voltage</b>	5V DC (USB Type A)
<b>Input Power</b>	1000mA
<b>WiFi Network</b>	2.4GHz only (802.11b/g/n)
<b>Shade Control Frequency</b>	433.92 MHz
<b>Range</b>	30 meters or 98 feet
<b>Protection Class</b>	IP20
<b>Operation Temperature</b>	32°F to 104°F (0°C to 40°C)



## Status Indicator

Color	Meaning	Duration
— Constant Blue	Working fine	Constant
— Slow Flashing Red	Wi-Fi is disconnected	Continuously till status change
— Slow Flashing Yellow	Wi-Fi is connected	Continuously till status change
•••• Quick Flashing Red	Bridge reset	5 times
— Slow Flashing Purple	Pairing underway	Continuously till status change
— Slow Flashing Green	Upgrade in progress	Continuously till status change

### Programming / Pairing

Press and hold programming button for about 2 seconds, then release until the LED blinks purple.

### Reset

Press and hold programming button for about 10 seconds, then release until the LED blinks red.